



Ardmore Roderick

# ENERGY & UTILITIES STATEMENT OF QUALIFICATIONS



# **TABLE OF CONTENTS**

Tab 01: About Ardmore Roderick	2
Tab 02: Energy & Utilities Leadership	3
Tab 03: Why Ardmore Roderick?	4
Tab 04: Safety Program	5
Tab 05: Energy & Utilities Services	6
Tab 06: Project Experience	7
• Electric	
• Natural Gas	
• Water & Drainage	
• Buildings & Facilities	
Tab 07: Ardmore Roderick Energy Solutions	15
Tab 08: Awards & Recognitions	16
Tab 09: Workforce Development	17
Tab 10: Community Engagement & Partnerships	18



**Our mission: To advance the design and construction of critical infrastructure and the built environment to improve communities.**



# ABOUT ARDMORE RODERICK

*Ardmore Roderick (AR) is a full-service infrastructure solutions firm providing design, construction management, and program management services to government and private transportation, utility, facility, rail, and aviation industries. We are dedicated to enhancing our client's business by providing professional services, strong leadership, hands-on involvement, and a personalized approach.*

## OUR MARKETS



ENERGY & UTILITIES



AVIATION



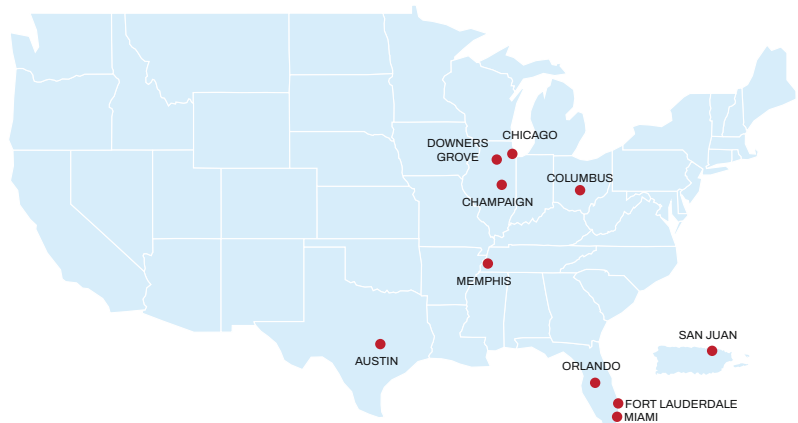
BUILDINGS & FACILITIES



RAIL & TRANSIT



TRANSPORTATION



**10**  
OFFICES

**300**  
EMPLOYEES

**65**  
LICENSED  
PROFESSIONALS

**60%**  
FIRM WORKFORCE  
DIVERSITY





## ENERGY & UTILITIES LEADERSHIP

TAB 01

TAB 02

TAB 03

TAB 04

TAB 05

TAB 06

TAB 07

TAB 08

TAB 09

TAB 10



### SHON YATES

Executive Vice President of Energy & Utilities

**Shon Yates** brings over 25 years of extensive expertise in the energy and utility sector. Leader of the North American energy and utilities practice, Yates is responsible for the delivery of design engineering, procurement, PMO, fuel supply, and construction management solutions that prioritize safety and drive significant value for clients. His role at Ardmore Roderick entails developing a comprehensive vision, strategy, and execution plan to expand our book of business and client base within the energy and utilities sector while contributing substantially to the overall profitability of the firm.



### EMEKA OKAFOR, PE, MSEE

Vice President of Energy & Utilities

**Emeka Okafor** is a dynamic and accomplished leader with two decades of industry experience and a proven track record of driving strategic initiatives and optimizing operations within the energy sector. Okafor has been responsible for Distribution Engineering, Reliability, Asset Management, Customer Design and Right-Of-Way acquisition groups to ensure the safe delivery of electricity to enhance the customer experience for 1.5 million customers. Emeka plays a key role in Ardmore Roderick's growth strategy in the Energy & Utilities markets. His responsibilities include supporting electric and gas utility clients to accomplish reliability and regulatory goals through asset renewal, infrastructure upgrades, and vegetation management services.



### AMA ADDAI, PE

Associate Vice President of Energy & Utilities

**Ama Addai** has over 18 years of civil engineering and construction management experience. She has worked on a variety of public and private projects, developing expertise in project management, utility coordination, and civil site design. Ama excels at managing multiple, complicated projects. She is an accomplished communicator and problem solver well versed in successful project delivery to both public and private clients. She was responsible for growing a utility infrastructure team of five to a team of over 25 multidiscipline Engineers, Surveyors, and Technicians in Chicago and Philadelphia.





# WHY ARDMORE RODERICK? >>

AR is a trusted leader in infrastructure solutions, delivering high-impact projects nationwide. With a proven track record across a broad range of sectors, we are uniquely positioned to support large-scale programs and developments with our extensive experience and deep expertise in infrastructure systems.

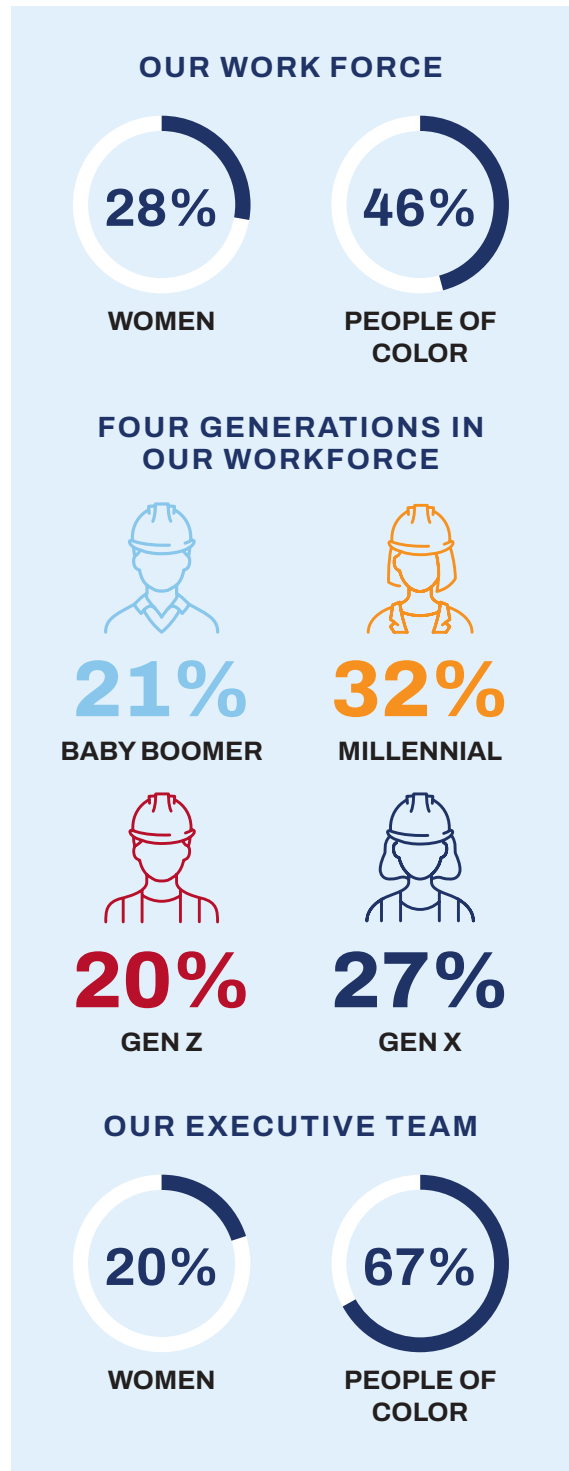
Our national reach allows us to provide services across multiple states, ensuring that our team is well-versed in navigating the complexities of local regulations, permitting processes, and stakeholder coordination in any region. We bring unrivaled insight and efficiency to every project we undertake within our core markets: aviation, buildings, energy & utilities, rail, and transportation.

**Over 60% of our diverse and inclusive team** come from underrepresented backgrounds, and we are committed to creating solutions that reflect the communities we serve.

At AR, we don't just deliver projects; we partner with our clients to achieve their vision, ensuring excellence at every step.

## OUR CERTIFICATIONS:

- Multi-state Professional Engineering Licensure (SE, PE)
- Project Management Professionals (PMP)
- Registered Architects (AIA)
- Professional Land Surveyors (PLS)
- Certified Survey Technicians (CST)
- OSHA Hazard Recognition Training
- OSHA Confined Space Entry Training
- Exelon Program Manager of Choice
- Exelon Specialty Engineer of Choice
- Certified Construction Managers (CCM)
- Certified OSHA 30 Safety Training
- LEED AP



TAB 01  
TAB 02  
TAB 03  
TAB 04  
TAB 05  
TAB 06  
TAB 07  
TAB 08  
TAB 09  
TAB 10

TAB 01  
TAB 02  
TAB 03  
TAB 04  
TAB 05  
TAB 06  
TAB 07  
TAB 08  
TAB 09  
TAB 10



# ARDMORE RODERICK SAFETY PROGRAM

AR upholds the highest standards of safety and reliability for its employees, clients, and the communities in which we work. As a fundamental part of our culture and operations, everyone in the firm is dedicated to putting safety first and is committed to constant growth and implementing systems for continuous improvement in safety.

## OUR COMMITMENT TO SAFETY

AR understands the importance of having its employees recognize hazards and risks, maintain situational awareness, know the whys behind our safety requirements, and understand the value of safety.

- AR is committed to the health and safety of its employees and the community, as such, AR sends out weekly safety communications with relevant safety information directed to both field and office employees.
- All current employees and new hires participate in safety onboarding training and annual safety refreshers every year.
- Our ‘Near Miss, Close Call, and Good Catch’ safety program helps gather leading indicators to better identify risks before they become incidents. AR recognizes that its single most valuable asset is its workforce.
- AR tracks OSHA metrics, Preventable Motor Vehicle Accidents (PMVA), and Total Recordable Incident Rates (TRIR) to industry trends and makes programmatic improvements and tools to improve safety.
- Our managers perform quarterly safety engagements, creating opportunities for open discussions about safety and fostering an inclusive, safety-focused culture.





# ENERGY & UTILITIES >>

AR delivers comprehensive utility services with expertise in electric, natural gas, and water systems. We specialize in utility distribution design, subsurface infrastructure, and strategic partnerships to execute capital projects efficiently. Our experience in managing water and drainage projects includes site grading, stormwater permitting, and hydraulic modeling. We excel in program and project management, offering solutions that integrate technical expertise and deep knowledge of the city's infrastructure, ensuring reliable and cost-effective results for our clients.

## Program/Construction Management Services

- Change Management
- Contract Administration
- Dashboard Development & Reporting
- Financial Administration
- Reporting & Business Analytics
- Risk Management
- Project Controls Management

## Design Services

- Electric Distribution
- Smart-Grid Systems & Distribution Automation
- Distributed Energy Resources & Microgrid Studies
- CAIDI, SAIFI & CEMI System Improvements
- NESC Line Clearance Resolutions
- Transmission Planning & Interconnection Studies
- Natural Gas Distribution
- Hydraulic Modeling & Drainage Studies
- Traffic Planning & Studies
- Highway, Roadway & Rail Improvements
- Site/Civil Grading and Drainage
- Structural Design & Assessments (Foundations/MH/Vaults)

## Additional Services

- Topographical Survey
- Field Services & Inspection
- Geographic Information Systems & Basemap Development
- ROW Permitting Coordination (DOT, Rail, One Call)
- Warehousing/Inventory Management
- Utility & Stakeholder Coordination
- Procurement Support

## Software

- Asset Suite EAM
- Primavera P6
- ArcGIS
- Autodesk AutoCAD
- Bentley MicroStation
- PLS-CADD
- PSS/E
- OpenRoads
- HEC-HMS
- FHWA HY-8
- Oracle Unifier

## PROJECT HIGHLIGHTS

### LOCATION:

Various

### CLIENTS:

BGE, ComEd, PECO, LUMA, Nicor Gas, Peoples Gas, Chicago Department of Water Management, Quanta, Stantec, Sargent & Lundy, HBK Engineering, Price Gregory

### SERVICES PROVIDED:



Civil/Structural Engineering



Aerial & Underground Electrical Distribution



Water & Drainage



Natural Gas Distribution



Program & Project Management



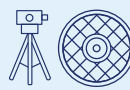
Scheduling & Estimating



Construction Management



Construction Inspection



Subsurface Utility Engineering & Survey



Safety Observations & Audits



# PROJECT EXPERIENCE



## ELECTRIC

### SOLAR PROGRAM IN NORTHERN, IL

AR currently provides Program Management Services supporting a number solar projects requiring both distribution line modification and substation modification to connect developer solar photovoltaic projects to Exelon infrastructure.

#### Highlights:

- Coordination with the solar developer, engineering design contractors, permitting authorities, real estate, construction contractors, and various stakeholders.
- Scheduling support as determined by the developer's needs, material availability outages.
- Financial tracking and reporting requirements with monthly forecasting sheets and providing phase authorization documentation.

**Construction Cost:** \$53 Million

**Dates:** 2023 - 2026

### VEGETATION MANAGEMENT PROGRAM IN SOUTHEASTERN, PA

AR currently provides Program Management Services to support a 10-year initiative focused on vegetation management, asset rejuvenation and large engineering solutions aimed at reducing the number of outages caused by vegetation.

#### Highlights:

- Define and maintain overall program scope, schedule, and cost from proposal to close out in accordance with the client's standards, policies and procedures.
- Oversight of engineering design contractors, construction contractors, and internal client vegetation crews.
- Executive reporting to provide client and all stakeholders with visibility and transparency of the program's success.

**Construction Cost:** \$38 Million Annually

**Dates:** 2022 - Present



TAB 01  
TAB 02  
TAB 03  
TAB 04  
TAB 05  
TAB 06  
TAB 07  
TAB 08  
TAB 09  
TAB 10







## ELECTRIC (CONT.)

### 4-34 KV VOLTAGE CONVERSION DESIGN IN SOUTHEASTERN, PA

In support of a 4 kV distribution substation retirement, AR designed the required upgrades for convert three 4 kV feeders into the 34 kV system.

#### Highlights:

- Converted three 4 kV feeders to the 34 kV system.
- Replaced all poles to meet 34 kV compliant standards.
- 7 new reclosers
- Replaced all pole-top transformers with dual-ratio transformers.
- Created the Conversion Plan.
- Specified the specific switching to be done per day to convert each section of the feeders.
- Incorporated input from construction crews and the client's operations department.

### DISTRIBUTION REBUILD DESIGN IN NORTHERN, IL

AR was responsible for design oversight of an overhead to underground conversion of an electrical distribution line in Rockford, IL.

#### Highlights:

- Project length = 1 mile of overhead to underground conversion.
- Installation of underground conduit, splice boxes, and switchgear padmount foundations.
- Coordination with adjacent transmission project.
- As-built design drawings.

### FACILITY RELOCATION IN NORTHERN, IL

AR served as the lead Engineer for a public relocation due to a road reconstruction project in Lombard, IL along IL-53 and IL-56.

#### Highlights:

- Design of 14 new manholes to replace an existing conduit and manhole system in conflict with proposed roadway improvements.
- Civil and electrical engineering coordination.
- Coordination with client's environmental department to lessen the impacts to wetlands and endangered species in the area.
- Coordination with client's substation engineering, capacity planning, and with other departments to ensure a smooth transition to the new facilities.



TAB 01  
TAB 02  
TAB 03  
TAB 04  
TAB 05  
TAB 06  
TAB 07  
TAB 08  
TAB 09  
TAB 10



## ELECTRIC (CONT.)

### EXELON (CONSTELLATION) BRIDGE INSPECTION

AR serves as Lead Bridge Inspectors for several bridges at the Dresden Power Generating Station in Morris, IL.

#### Highlights:

- Load Rating Inspection of 13-span concrete channel-beam bridge, serving as only heavy haul entry and exit for the station. Verified IDOT load posting on bridge and potential rehab options with level of effort cost estimates.
- Bridge Inspection of four additional 2-span bridges to assist in identifying alternate heavy haul paths, including a finding that resulted in needed bridge repairs.
- Future Routine Bridge Inspections for bridges that currently serve as only heavy haul entry and exit for the station.

Challenges have included a detailed Safety Plan for these bridges that span over the intake and cooling channels for the plant's system, typically with high water surface elevations and very high flow rates; high-security access was also coordinated for private bridges inside the station.

### MITIGATION WIRE INSTALLATION DESIGN IN NORTHERN, IL

AR was involved in the base map review, project design, site walk down, installation guidance, project management, railroad coordination and permitting efforts for a 16-mile mitigation wire installation project along the Canadian National's railroad.

#### Highlights:

- Coordination was required with CN, BRC, BNSF and CSX railroads, as well as the MWRD, oil and gas pipelines and municipal water departments for installation approvals.
- Once the design was approved, AR worked with several vendors and wholesalers for material quotes, as well as providing construction support and responding to Requests for Information (RFI's) from the contractor.





## NATURAL GAS

### DUBUQUE PIPELINE REPLACEMENT PHASES 6, 7, & 8

AR is partnered with Price Gregory International to complete the replacement of a 60-mile section of a 70+ year old, 22” natural gas pipeline for Nicor Gas. The project includes installation of a new 24” pipeline, main line valves, and distribution stations.

#### Highlights:

- Work in conjunction with Prime Contractor’s Purchasing agent and field staff to create a seamless process for the procurement of material, equipment rental, and the execution of subcontracts.
- Establish the local, regional, and national vendor accounts necessary to service the project.
- Fast-paced issuance of purchase orders required for vendor supplies and/or services.
- Weekly invoice processing to ensure on-time vendor payments for a variety of payment terms.

**Construction Cost:** \$170 Million

**Dates:** 2022 – Present

### NICOR AUX SABLE PHASE 5 PIPELINE REPLACEMENT PROJECT

As-Built Surveys were performed after construction to accurately catalog and record Pipe Number, Heat Number, Length, Weld Number, and Nicor ID Numbers for the new 36” steel pipe. AR provided survey services for the removal of existing pipe, and installation of seven miles of new 36” steel pipe within Transmission Tower right-of-way in Plainfield, Illinois.

**Service Fee:** \$234K

**Dates:** 2017 – 2018

### STATION BUNDLE REPAIR & REPLACEMENT

AR partnered with InfraSource Pipeline Construction to repair and replace five natural gas regulators at stations throughout Northern Indiana, working closely with client personnel and third-party vendors. The project adheres to client Gas Construction Standards, ensuring high-quality upgrades to each station. Key improvements at the Monoquet station include installing advanced components and retiring outdated infrastructure. AR’s role encompasses comprehensive project management, from design to execution, ensuring timely and efficient completion of all upgrades.

**Construction Cost:** \$6 Million

**Dates:** 2024 – Present





# PROJECT EXPERIENCE

TAB 01  
TAB 02  
TAB 03  
TAB 04  
TAB 05  
TAB 06  
TAB 07  
TAB 08  
TAB 09  
TAB 10



## WATER & DRAINAGE

### CITY OF CHICAGO DEPARTMENT OF WATER MANAGEMENT (DWM) CAPITAL IMPROVEMENT PROGRAM

AR plays a vital role in the Program Management Services for the City of Chicago Department of Water Management (DWM) as part of the Design PMO team. Our scope of services includes oversight of the Force Account Group, which manages 400 to 800 monthly requests such as construction submittal reviews, utility conflict resolutions, hydrant relocations, valve operations, and modifications to the distribution system. Our team provides key personnel including Force Account Leads, Field Resident Engineers, and GIS and CADD support to ensure efficient and effective program execution.

**DWM Annual Budget for Capital Projects:**

\$600-\$800 Million

**Dates:** 2023 – Present

### CITY OF CHICAGO'S PRIVATE DRAIN PROGRAM

AR has been a proud partner in the City of Chicago's Private Drain Program, a critical initiative aimed at maintaining and improving the city's drainage infrastructure. This program focuses on ensuring that private drains are functioning correctly, thereby preventing flooding and water damage to private properties and city streets. Our role in this program involves providing comprehensive construction inspection services to guarantee the quality and integrity of the drainage work performed.

**Construction Cost:** \$60 Million

**Dates:** 2015 – Present

### NORFOLK SOUTHERN RAILROAD/IDOT DRAINAGE IMPROVEMENTS (CREATE PROJECT EW2)

AR was part of the design team responsible for the EW2 segment of the 75th Street Corridor Improvement Project (CIP) on the south side of Chicago. AR led the design of drainage improvements throughout the corridor, including completing the base mapping of existing utilities and assisting with track plan and profile design. The drainage design required coordination with adjacent infrastructure improvement projects, preparing stormwater permits, and ensuring strict compliance with various design criteria, including Norfolk Southern Design Specifications and Chicago Department of Water Management - Stormwater Regulations.

**Highlights:**

- \$4.6 Billion Project Investment
- 44,000 Estimated jobs created
- \$31.5 Billion in generated economic benefits
- 70+ Projects throughout Chicago Region

**Dates:** 2021 – Present





## BUILDINGS & FACILITIES

### TOLLWAY ROCKFORD MAINTENANCE FACILITY RECONSTRUCTION

AR was the Prime Consultant for the Illinois State Toll Highway Authority (ISTHA) Phase III Construction Management services for the reconstruction of the Rockford (M-7) maintenance site on the Jane Addams Memorial Tollway (I-90). This project is part of the 15-year, \$12 Billion capital program, Move Illinois: The Illinois Tollway Driving the Future.

The project involved construction of a 60,000 SF maintenance facility (truck parking, mechanic's bays, parts and supports services). In addition, the project required close coordination with Illinois ISTHA Maintenance to reduce the impact on operations during construction. As part of this project, AR managed the work of six subconsultants and the project was successfully completed on-time and within budget.

**Construction Cost:** \$25 Million  
**Dates:** 2016 - 2018

### TOLLWAY MAINTENANCE FACILITY RENOVATION AND ADDITION

AR served as the Prime Consultant for Phase III Construction Management (CM) services for the construction of the M-2 Maintenance Facility addition and renovations on the Tri-State Tollway (I-294). AR's CM team consisted of four subconsultants providing construction management, inspection and material testing services. The CM team provided inspection of the daily site activities to ensure Contractor adherence to project specifications, documentation of material incorporated into the work, contract administration and submittal review and coordination with the Designer/Architect. In addition, AR's CM team was in close contact and coordinated with multiple departments of the Tollway throughout the course of construction, including the Tollway's IT, Maintenance, Operations, and Fleet Management groups.

**Construction Cost:** \$11.3 Million  
**Dates:** 2019 - 2020





# PROJECT EXPERIENCE

TAB 01  
TAB 02  
TAB 03  
TAB 04  
TAB 05  
TAB 06  
TAB 07  
TAB 08  
TAB 09  
TAB 10



## BUILDINGS & FACILITIES (CONT.)

### LOCKHEED MARTIN SPACE BUILDING RENOVATIONS AND SITE DEVELOPMENT

AR served as the Design-Build firm for two critical projects at Lockheed Martin Space. The team completed a 5,000 SF interior renovation of classified spaces, ensuring ICD/ICS705 TEMPEST compliance while adapting to evolving client requirements. Following this, AR modernized 27,000 SF of administrative space on the second floor for the program, achieving the renovation with minimal disruption to the fully occupied building.

#### Highlights:

- Delivered secure renovations that met stringent TEMPEST standards.
- Executed a seamless modernization with minimal impact on occupied spaces and integrated with existing facilities.

#### Construction Cost:

B810 First Floor Closed Area Suite: \$1.4 Million  
Second Floor: \$3.3 Million

#### Dates:

B810 First Floor Closed Area Suite: 2019 – 2020  
Second Floor: 2023 – 2024

### LOCKHEED MARTIN SPACE LOGISTICS CENTER SITE DEVELOPMENT/ NEW CONSTRUCTION

AR was awarded the design and construction of a 48,000 SF facility for Lockheed Martin in Titusville, FL. The new building, which includes a high bay stockroom, hazardous material storage, and various support spaces, was seamlessly connected to existing Lockheed Martin facilities to create a cohesive and secure campus.

#### Highlights:

- Designed and constructed a 48,000 SF facility with integrated life safety, HVAC, and security systems.
- Completed the project from site construction to interior fit-out in just five months.

#### Construction Cost: \$9.4 Million

Dates: 2021 – 2022





## BUILDINGS & FACILITIES (CONT.)

### OBAMA PRESIDENTIAL CENTER

As part of a Joint Venture, AR serves as the Program Manager for the Obama Presidential Center. Our comprehensive services span four key phases: pre-design/planning, design, construction, and close-out and commissioning. Our team works diligently to manage project schedules, budgets, and contractor coordination while ensuring quality control, transparency, and effective stakeholder communication throughout the project lifecycle.

#### Highlights:

- 19.3-acre campus
- 225 feet tall concrete tower
- 45,000-square-foot multipurpose events facility

**Construction Cost:** \$600 Million

**Dates:** 2019 – Present

### COOK COUNTY PUBLIC SAFETY CAPITAL PROGRAM

As part of a Joint Venture, AR provides comprehensive construction management services for the Cook County, IL Public Safety portfolio. Our responsibilities include annual capital planning, stakeholder engagement, design management, and construction management for approximately 330 projects. Representative projects encompass courtroom technology upgrades, facility hardening, accessibility improvements, HVAC upgrades, detention facility upgrades, and a new state-of-the-art medical examiner facility.

**Construction Cost:** \$120 Million Annually

**Dates:** 2022 – Present





*Ardmore Roderick Energy Solutions was created to supply and manage a broad range of energy products and solutions across North America. We provide a consolidated fuel card program, mobile fueling, and bulk fueling solutions which enable greater control over your energy costs, simplifies accounting, and drives operational efficiencies.*

### **Fueling Program WEX Card Administration**

- Processes retail fuel invoices for 60+ operating companies
- Manages the process from invoicing and reconciliation through payment to WEX
- Invoices include item details
- Maintains fuel credits and rebates by ensuring accurate and on-time payments

### **Future Fuel Capabilities**

- Establish an Ardmore Roderick Energy Solutions branded fuel card
- Expand retail fueling and service offerings beyond current client list
- Expand to become a fully managed fuel program to include retail, mobile, and on-site bulk fueling
- Provide a centralized integrated fuel management and billing and settlement solution

### **Procurement Capabilities**

- Subcontractor management services
- Project based indirect material purchasing
- Invoice consolidation and settlement services

### **Future Procurement Capabilities**

- P-card program administration
- Investment recovery services
- Direct and indirect procurement services
- Logistics and warehousing
- Material kitting
- Consignment services



**Ardmore Roderick**  
**ENERGY SOLUTIONS**



TAB 01  
TAB 02  
TAB 03  
TAB 04  
TAB 05  
TAB 06  
TAB 07  
TAB 08  
TAB 09  
TAB 10





## Celebrating & Honoring Excellence: Ardmore Roderick’s remarkable contributions throughout the years.



### ENR PROGRAM MANAGEMENT

AR was recently named #21 on the ENR list of Top Program Management Firms for 2024. Being included on this list highlights our commitment to delivering high-quality services and reinforces our reputation as a trusted leader in the field. AR also received this award in 2021, 2022, and 2023.



### MBE ADVOCATE OF THE YEAR

AR’s Executive Vice President of Energy & Utilities, Shon Yates, was named the 2023 “MBE Advocate of the Year” at the Eastern Minority Supplier Development Council’s Annual Choice Awards. The award honored Shon’s significant expertise and successful leadership in procurement and business strategy industry. He was recognized for setting new benchmarks within the procurement and supply chain industry.



### EAGLE AWARD

AR was selected for the 2020 Eagle Award from the African American Chamber of Commerce of Central Florida. This award recognizes and honors an African American business that has made notable, long-term contributions to economic development in its industry and community. The focus of the award is on financial performance and future objectives, the competitive advantage of the business, and examples of specific strategies that have driven business growth.



### CRAIN’S FAST 50

AR has been recognized in Crain’s Chicago Business Fast 50, which highlights the fastest-growing companies in the Chicago area. This accolade underscores AR’s significant growth and impact in the industry. The company has been honored multiple times for its rapid revenue increase and successful expansion across various infrastructure projects, reflecting its commitment to excellence and innovation in engineering services. AR also received this award in 2019, 2020, and 2021.



TAB 01  
TAB 02  
TAB 03  
TAB 04  
TAB 05  
TAB 06  
TAB 07  
TAB 08  
TAB 09  
TAB 10



2024 ARDMORE RODERICK INTERNS

## Empowering Tomorrow's Workforce: Ardmore Roderick's Impact on Skills Development for Success

Through strategic partnerships with community initiatives and training programs, we actively invest in nurturing the next generation of professionals. Our commitment ensures that our workforce stays adaptable, competitive, and primed for success, thus fostering innovation and inclusive growth within our organization. Highlighted as a prime example of internal workforce development, our recent success story showcases three ambitious civil engineers who seamlessly transitioned from roles in design and engineering within the utilities market to flourishing careers in pipeline construction.



Ardmore Roderick's internship program offers students the chance to gain hands-on experience, broaden their professional network, and travel to real project sites to see their ideas come to life. With a focus on professional development through mentoring and feedback, interns have the opportunity to build a portfolio of work samples and launch their careers in a collaborative environment with competitive pay.



YearUp is dedicated to providing equal access to economic opportunity, education, and justice to young adults regardless of their background, income, or location. AR's President & CEO, Rashod Johnson has been a previous member of the board, our employees have actively engaged as mentors and AR has given opportunities to several students, many of whom have advanced in their careers and continue to contribute to the success of Ardmore Roderick.



The PLCCA Opportunities Works Program places young adults in subsidized internships, exposes them to viable careers, expands their skill sets, and connects them to the training and resources they need to achieve long-term employment in growing industries. AR has recruited interns from the program who have transitioned into full-time employees.

"When I first got this internship I was already excited to have the opportunity to work with Ardmore Roderick. But actually going through the internship a lot of things that happened – I didn't expect to happen like meeting President Obama, the opportunities given on my project site, or even at Ardmore Roderick itself like the lunch & learns, the visits to other projects, the outings. There was a lot to learn and it made me very excited going forward with my career."

**KYLA DAVIS**  
Northern Illinois University, AR Intern Class of 2024





*As part of our mission to improve communities, AR is changing lives by not only improving public infrastructure, but by directly assisting the residents of the communities. AR staff is very generous with their time and regularly volunteers for community improvement programs such as Habitat for Humanity, parks improvements, tutoring, judging science and engineering fairs, classroom demonstrations, 3D printing seminars, assisting at local food banks and more. If not us, then who?*



## INSPIRING FUTURE ENGINEERS THROUGH COMMUNITY ENGAGEMENT

At Ardmore Roderick, we believe that fostering a love of STEM in students begins at an early age. Our employees are actively involved in community outreach, providing classroom mentoring to introduce young students to the principles of STEM through hands-on activities. By engaging with elementary school students in underserved areas, we aim to inspire the next generation of engineers and encourage them to pursue further education and careers in STEM fields.





Ardmore Roderick

## **INFRASTRUCTURE LEADERS. PROJECT PARTNERS.**

**TALK TO US.**

**Shon Yates**

Executive Vice President, Energy & Utilities | Ardmore Roderick  
President | Ardmore Roderick Energy Solutions  
[syates@ardmoreroderick.com](mailto:syates@ardmoreroderick.com)

